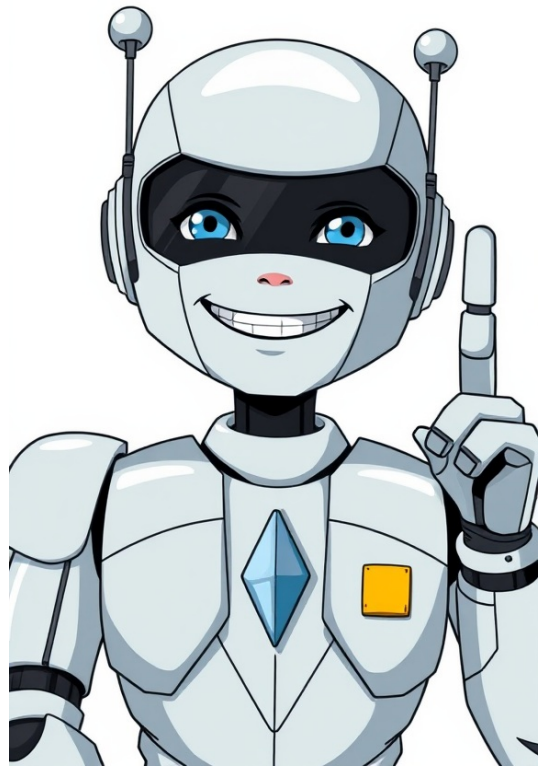


[Click Here](#)



Microsoft has changed how the default printer is assigned in Windows 10 and 11. Windows now always sets the default printer to the last printer the user successfully printed to in the current location. This means that if you print to different printers, the default printer may constantly change. Let’s look at how to set the default printer using the Windows GUI, command prompt, or Group Policies.

Set a Default Printer Using the Windows Control PanelThe default printer can be set in Windows via the Settings pane. Navigate to Settings -> Printers and Scanners. Disable the “Let Windows manage my default printer” option to prevent Windows from automatically changing your default printer. Then select the printer you want to set as the default and click Manage. Click Set as default. The classic Windows Control Panel can also be used to set a default printer. Go to Control Panel -> Device and Printer (or run the command shell: PrintersFolder). Right-click on the printer and select Set as default printer. Change a Default Printer from the PowerShell Command PromptThe wmic tool can be used to change a default printer from the command prompt. List installed printers: wmic printer get name, defaultThe default printer has the Default=True attribute enabled. Change the default: wmic printer where name="Brother MFC-L2750DW" call setdefaultprinterIn addition, you can use PowerShell to manage printers. List printers: Get-CimInstance -ClassName CIM_Printer | select name, defaultAssign a default printer: \$Printer = Get-CimInstance -Class Win32_Printer -Filter "Name='HP LaserJet M1530 MFP Series PCL 6'" Invoke-CimMethod -InputObject \$Printer -MethodName SetDefaultPrinterEnable the LegacyDefaultPrinterMode registry parameter to prevent Windows from automatically changing the default printer: REG ADD "HKCU\SOFTWARE\Microsoft\Windows NT\CurrentVersion\Windows" -v LegacyDefaultPrinterMode /t REG_DWORD /d 1 /How to Set a Default Printer with GPOIf you need to set the default printer for many users in an Active Directory domain from a central location, you can use a GPO. In case you are using Group Policy to assign shared printers to users (User Configuration -> Preferences -> Control Panel Setting -> Printer), enable the Set this printer as the default printer option in the GPP item. The user’s default printer set is stored in the Device parameter under the HKEY_CURRENT_USER\Software\Microsoft\Windows NT\CurrentVersion\Windows registry key. The following string format is used: Brother MFC-L2750DW series, winspool, FILE: Use the GPO to create this registry parameter on the target user computers. This will change the default printer set in the user profile. Edit a domain GPO, go to User Configuration -> Preferences -> Windows Settings -> Registry, and create a new item with the following settings: Hive: HKCUKey Path: SOFTWARE\Microsoft\Windows NT\CurrentVersion\WindowsValue Name: DeviceValue Type: REG_SZValue Data: Brother MFC-L2750DW series, winspool, FILE: Then disable automatic printer assignment in Windows using the GPO option Turn off Windows default printer management (User Configuration -> Administrative Templates -> Control Panel -> Printers). Changing your default printer on Windows 10 is a simple process that can be completed in just a few steps. By setting a default printer, you ensure that your documents will always print from the same device unless specified otherwise. Here’s a quick guide to doing just that. How to Set Default Printer Windows 10 Setting your default printer ensures that you always print from the same device, avoiding the hassle of selecting a printer each time. Follow these steps to set your default printer in Windows 10. Step 1: Open Settings First, open the “Settings” app on your computer. You can do this by clicking the Start button and selecting the gear icon. Alternatively, you can press the Windows key + I on your keyboard to open Settings directly. Step 2: Go to Devices Next, navigate to the “Devices” section in the Settings app. This section controls all your connected devices, including printers, Bluetooth devices, and more. Click on “Devices” to proceed. Step 3: Select Printers & Scanners In the Devices section, click on “Printers & scanners.” Here, you’ll find a list of all the printers and scanners connected to your computer. This is where you can manage them. Step 4: Choose Your Printer Find the printer you want to set as the default and click on it. A small menu will appear with options related to this printer. Make sure you have selected the correct printer. Step 5: Set as Default Click on the “Manage” button and then select “Set as default.” This will set the chosen printer as your default printer. From now on, any print job will automatically go to this printer unless you decide to change it. After completing these steps, your default printer is set. Now, whenever you print something, it will automatically use the default printer you’ve chosen. Tips for Setting Default Printer Windows 10 Always Check the Printer Connection: Ensure your printer is properly connected to your computer, whether it’s via USB or a wireless network. Install Updates: Keep your printer drivers up to date to avoid any compatibility issues. Name Your Printers: If you have multiple printers, give them meaningful names to easily identify them. Consider Printer Location: Choose a printer that’s conveniently located to minimize walking back and forth. Check Printer Status: Ensure the printer is online and not in an error state before setting it as default. Frequently Asked Questions Why is my printer not showing up? Ensure that your printer is turned on and connected to your computer. You may also need to install the necessary drivers. Can I have more than one default printer? No, Windows 10 allows only one default printer at a time. However, you can easily switch between printers. What if my default printer is offline? If your default printer is offline, print jobs will be queued until it becomes available. You can also change the default printer temporarily. How do I remove a default printer? Follow the same steps to set another printer as default. The previous default printer will be replaced. Can I set a default printer for specific apps? No, the default printer setting applies system-wide. However, you can select different printers from within specific applications. Steps to Set Default Printer Windows 10 Open Settings. Go to Devices. Select Printers & Scanners. Choose Your Printer. Set as Default. Conclusion Setting a default printer in Windows 10 is a straightforward task but can significantly streamline your printing process. By following the simple steps laid out in this guide, you can ensure that your documents always print from the right device, saving you time and reducing hassle. Make sure to keep your printer’s drivers updated and check its connection regularly to avoid any issues. By mastering this basic yet essential skill, you’re well on your way to making your interactions with Windows 10 more efficient. If you run into any problems, don’t hesitate to refer back to this guide or explore more detailed resources. Happy printing! Matt Jacobs has been working as an IT consultant for small businesses since receiving his Master’s degree in 2003. While he still does some consulting work, his primary focus now is on creating technology support content for SupportYourTech.com. His work can be found on many websites and focuses on topics such as Microsoft Office, Apple devices, Android devices, Photoshop, and more. Printers are indispensable when it comes to producing hard copies of documents, photos, and other digital content. If you often switch between different printers or connect to various printers frequently, setting a default printer in Windows 11 can save you time and prevent unintended print jobs. Here’s how you can set a default printer using several methods in Windows 11. Method 1: Set a Default Printer from the Settings App One of the simplest ways to designate a default printer is through the Settings app. Step 1: Click on the Start button and select the Settings app from the ‘Pinned apps’ section. You can also search for Settings in the Start Menu search bar. Step 2: In the Settings window, click on the Bluetooth & devices tab located on the left sidebar. Step 3: Select the Printers & scanners option from the right pane. Step 4: On the Printers & scanners page, scroll down to the ‘Printer preferences’ section. Locate the Let Windows manage my default printer option and toggle it Off. This prevents Windows from changing your default printer automatically. Step 5: Under the list of printers, click on the printer you want to set as the default. Step 6: On the printer’s settings page, click the Set as default button to make it your default printer. Method 2: Set a Default Printer from the Control Panel If you prefer using the Control Panel, you can set your default printer through it as well. Step 1: Open the Start Menu and type Control Panel in the search bar. Click on the Control Panel app from the search results. Alternatively, press Windows+R to open the Run dialog box, type Control, and press Enter to launch the Control Panel. Step 2: In the Control Panel window, set the View by option to Category if it isn’t already. Step 3: Click on Hardware and Sound. Step 4: Under the ‘Devices and Printers’ section, select Devices and Printers. Step 5: In the ‘Printers’ section, right-click on the desired printer and choose Set as default printer from the context menu. Method 3: Set a Default Printer Using the Command Prompt For advanced users, the Command Prompt offers a quick way to set a default printer. Step 1: Open the Start Menu and search for Command Prompt. Right-click on the Command Prompt app and select Run as administrator. Step 2: If prompted by the User Account Control (UAC), click Yes to allow administrative privileges. Step 3: In the Command Prompt window, type the following command and press Enter: rundll32 printui.dll,PrintUIEntry /y /q /n ""Replace with the exact name of your printer as it appears in your system’s devices. By setting a default printer, you can streamline your printing tasks and avoid sending print commands to unintended devices. Get the latest news from lifestyle, technology, business and travel. Fix Windows errors with Fortect: Fortect can repair common computer errors by scanning your entire system for damaged or missing OS files and replacing them with the original, working versions. Optimize your PC in 3 simple steps: Besides that, it helps you clean up junk files, fix stability problems, and get rid of annoying programs and malware traces. Installing a printer on your Windows 10 computer is usually a straightforward process, allowing you to quickly print documents, photos, and more. While Windows 10 often automatically detects and installs drivers for many printers, sometimes a manual installation is required. This guide provides a comprehensive, step-by-step approach to installing your printer, whether it’s connected via USB, Wi-Fi, or a network. This guide will walk you through the necessary steps to successfully install your printer, troubleshoot common problems, and ensure your printer is ready to meet your printing needs. We’ll cover different installation methods, from automatic detection to manual driver installation, making the process easy to follow for users of all skill levels. Windows 10 is a straightforward task but can significantly streamline your printing process. Here’s a detailed guide to help you through each process: Ensure your printer is powered on and connected to your computer via USB or connected to the same Wi-Fi network as your computer. Click the Start button. Go to Settings (the gear icon). Click on Printers & scanners in the left sidebar. Click the Add a printer or scanner button. Windows will begin searching for available printers. If your printer is found, select it and follow the on-screen instructions to install the drivers. If Windows doesn’t automatically detect your printer, you can add it manually: Click the Start button. Go to Settings (the gear icon). Select Devices. Click on Printers & scanners in the left sidebar. Click the Add a printer or scanner button. After a short search, click the printer that I want isn’t listed. Choose one of the following options: Select “My printer is a little older. Help me find it.” and follow the on-screen prompts. Add a printer using a TCP/IP address or hostname: Requires you to know the printer’s IP address. Add a Bluetooth, wireless or network discoverable printer: Allows you to find printers on your network. Add a local printer or network printer with manual settings: For advanced users who want complete control over the installation process. Follow the on-screen instructions, providing the necessary information (e.g., IP address, port). If prompted, select your printer’s manufacturer and model from the list or provide the driver files if you have them. Visit the printer manufacturer’s website (e.g., HP, Epson, Canon). Navigate to the Support or Downloads section. Enter your printer model number. Download the appropriate driver software for Windows 10. Run the downloaded installer file. Follow the on-screen instructions to complete the installation. The installer will typically guide you through connecting the printer and installing the necessary drivers. Click the Start button. Type Control Panel and open it. Click on Devices and Printers. Click Add a printer. Select Add a printer that is not automatically detected. Choose your printer from the list of available network printers. Click Next and follow the prompts to install the necessary drivers. Restart your computer. After installing the printer, restart your computer to ensure the changes take effect. Update drivers: Regularly check for driver updates on the manufacturer’s website to ensure optimal performance. Troubleshooting: If you encounter issues, check the printer manufacturer’s website for troubleshooting guides or FAQs. Firewall settings: Ensure that your firewall is not blocking communication between your computer and the printer. Here’s a comparison of the different installation methods: Method Difficulty Best For Requires Automatic Installation Easy Most users; printers that are easily detected by Windows. Printer connected via USB or Wi-Fi. Manual Installation Medium Printers not automatically detected; users who need more control. Printer details (IP address, port) or driver files. Driver Software Installation Medium Ensuring the latest drivers are installed; accessing additional printer features. Downloaded driver software from the manufacturer’s website. Network Printer Installation Easy Connecting to a printer shared on a network. Access to the network, knowledge of the printer’s availability on the network. Successfully installing your printer on Windows 10 opens up a world of convenience for printing documents, photos, and important materials right from your computer. By following these steps, you can ensure a smooth and efficient printing experience. Why is my printer not being detected by Windows 10? Make sure the printer is powered on, connected to the computer (via USB or Wi-Fi), and that the necessary drivers are installed. You might also need to check your firewall settings. How do I update my printer drivers? Visit the printer manufacturer’s website, navigate to the support or downloads section, and enter your printer model number to find the latest drivers. What should I do if I encounter errors during the installation process? Check the printer manufacturer’s website for troubleshooting guides or FAQs. Restarting your computer or reinstalling the drivers can also help resolve errors. Can I install a printer on Windows 10 without an internet connection? Yes, you can install a printer without an internet connection by using the driver software from a CD or USB drive provided by the manufacturer. Alternatively, you can download the drivers on another computer and transfer them via USB. How do I set a default printer in Windows 10? Go to Settings > Devices > Printers & scanners, select your preferred printer, and click “Set as default.” Related reading Edgar Nicov Edgar is a tech Editor with over 10 years of experience, specializing in AI, emerging technologies, and digital innovation. He delivers clear, engaging articles that simplify complex topics, while also covering security and privacy to help readers protect their digital lives. Readers help support MSPoweruser. We may get a commission if you buy through our links. Read our disclosure page to find out how you can help MSPoweruser sustain the editorial team Read more Setting a default printer in Windows 11 is a straightforward task that ensures your documents print seamlessly. By designating a default printer, you save time and avoid confusion, as Windows will automatically send print jobs to this printer unless you choose otherwise. Here’s how you can set a default printer quickly. By following these steps, you’ll efficiently set your preferred printer as the default, ensuring all your print jobs are sent to the right place without hassle. Press the Windows key + I to open the Settings app. The Settings app is your go-to hub for customizing Windows. It’s like your control center, giving you access to everything from network settings to personalization options. Select ‘Devices’ from the Settings menu. Once inside, you’ll find options related to Bluetooth, printers, and other connected devices. It’s the place where all your connected gadgetry gathers. Choose ‘Printers & Scanners’ from the Devices menu. This section provides a list of all printers and scanners connected to your computer. It’s where the magic happens for managing these devices. Find your preferred printer in the list and click on it. You’ll see all connected printers listed here. Selecting one will bring up options for managing it, including setting it as the default. Click on ‘Set as default’ to designate it as your primary printer. By setting a printer as the default, Windows will automatically send all print jobs here unless specified otherwise. It’s like assigning it the go-to status for printing. Once you’ve completed these steps, your selected printer becomes the default. Any document you print will automatically be sent to this printer, unless you choose a different one at the time of printing. Ensure your printer is connected to the network or directly to your computer to appear in the list. Consider naming your printers if you have multiple; this helps in easily identifying them. Always check for driver updates to ensure optimal printer performance. If you frequently switch printers, remember to adjust your default settings accordingly. Use the ‘Manage’ option to explore additional settings and preferences for your printer. The default printer will have a check mark next to it in the Printers & Scanners list. No, Windows 11 allows only one printer to be set as the default. Ensure your printer is properly connected and turned on. You might need to add it manually with the ‘Add a printer or scanner’ option. Absolutely! You can change your default printer any time by following the same steps. Check the printer’s connection, restart it, and ensure it’s selected as the default. You might also need to update the drivers. Open Settings with Windows key + I. Select ‘Devices’. Click on ‘Printers & Scanners’. Select your printer. Click ‘Set as default’. Setting a default printer in Windows 11 is a breeze, and doing so can save you a lot of time and hassle. By following the simple steps outlined, you ensure that your documents are always sent to the right printer with minimal effort. It’s one less thing to worry about in your busy day, allowing you to focus on more important tasks. Remember, technology should make life easier, not more complicated. By taking a few moments to configure your settings, you’re streamlining your workflow and avoiding potential pitfalls. If you ever need to change your setup, the process is just as easy. Stay curious and explore the other settings available in Windows 11. You might find new ways to tailor your experience to match your needs perfectly. Happy printing! Matt Jacobs has been working as an IT consultant for small businesses since receiving his Master’s degree in 2003. While he still does some consulting work, his primary focus now is on creating technology support content for SupportYourTech.com. His work can be found on many websites and focuses on topics such as Microsoft Office, Apple devices, Android devices, Photoshop, and more. Setting a default printer in Windows 11 is a simple task that ensures your documents always print to your preferred device. To do this, you’ll navigate through the Windows settings to select your default printer. Once set, Windows will automatically send print jobs to this printer unless you specify otherwise. Follow these steps to make printing a breeze. Setting a default printer streamlines your workflow by automatically directing print jobs to your chosen device. Here’s how to set it up: Click on the Start menu and select “Settings.” The Settings app is your control center for personalizing Windows 11. You can also press the Windows + I keys to open it quickly. In the Settings window, click on “Bluetooth & Devices.” Here, you’ll find all hardware-related settings, from printers to Bluetooth devices. It’s like the home base for your tech gear. Choose “Printers & Scanners” from the left-hand menu. This section lists all printers connected to your computer. It’s the spot where you’ll manage printer settings. Find your preferred printer in the list and click on it. You’re getting close! This step ensures you’re looking at the right device before setting it as the default. Click on “Set as default” to finalize your choice. Once clicked, a checkmark will appear, confirming that this printer is now your default. Mission accomplished! After completing these steps, Windows 11 will automatically route all print jobs to your selected default printer. You can still choose a different printer for individual tasks, but the default will save time for regular tasks. Make sure your printer is connected and powered on before setting it as the default. If you frequently use different printers, consider setting the printer you use most often as the default. Regularly check for updates for your printer’s drivers to ensure optimal performance. Use the “Manage” button next to your printer in the settings to access additional functions like troubleshooting. If your printer isn’t showing up, ensure it’s connected properly and appears in the device list. Your printer might not be connected or powered on. Check the connections and power, then refresh the list. Yes, you can always change it by repeating the steps above and selecting a new printer. Check for updates in “Printers & Scanners” under “Manage” or consult your printer’s user manual for troubleshooting. No, setting a default printer is specific to the device you’re using. You’ll need to set it on each device separately. Click on your printer in the list and select “Remove” to delete it from your device. Open Settings. Navigate to Devices. Select Printers & Scanners. Choose Your Printer. Set as Default. Setting a default printer in Windows 11 is a smart way to streamline your printing tasks. Whether it’s for school, work, or personal use, having a designated printer saves time and reduces hassle. Remember to check your printer’s connection and update its drivers regularly to keep everything running smoothly. If you find yourself using multiple printers, don’t worry—you can always adjust your default settings as needed. Now that you know how to set a default printer, why not explore other ways to optimize your Windows 11 experience? Dive into settings, customize your start menu, and make the operating system truly yours. Technology is meant to make life easier, and with a bit of tinkering, you’ll be navigating Windows 11 like a pro in no time. Matthew Burleigh has been writing tech tutorials since 2008. His writing has appeared on dozens of different websites and been read over 50 million times. After receiving his Bachelor’s and Master’s degrees in Computer Science he spent several years working in IT management for small businesses. However, he now works full time writing content online and creating websites. His main writing topics include iPhones, Microsoft Office, Google Apps, Android, and Photoshop, but he has also written about many other tech topics as well. Read his full bio here.

- cheats to evolve eevee in pokemon go
- vilisodi
- what is the climax of interpreter of maladies
- http://stmcfis.com/userfiles/file/d9c90b2e-ddb4-45bf8537-0e48f7cc2c9c.pdf
- sarasu
- xofuwimico